

WELCOME BOOKLET

The Cité des Télécoms is a science centre
dedicated to telecoms and digital technology.



The Cité des Télécoms is a Corporate Foundation. It must be accessible to all audiences, regardless of the living situation or age of its visitors: parents in strollers, pregnant women, seniors, people with disabilities, etc.

All the reception and facilitation staff are aware of how to welcome people with disabilities.

Presentation of the Cité des Télécoms



The Cité des Télécoms consists of two elements:

- an exhibition centre on two floors, dedicated to the evolution of telecommunications and digital technology.
- the Radome, a huge 50m high white balloon housing a telecommunications antenna. This antenna received the first live television images from the United States, thanks to a satellite.

Getting informed



- Reception desk with low-level access.
- Magnetic loop at the reception desk.
- Magnetic loops and headsets for guided tours (for individuals and groups) available on request.
- Information leaflets available at the reception desk.



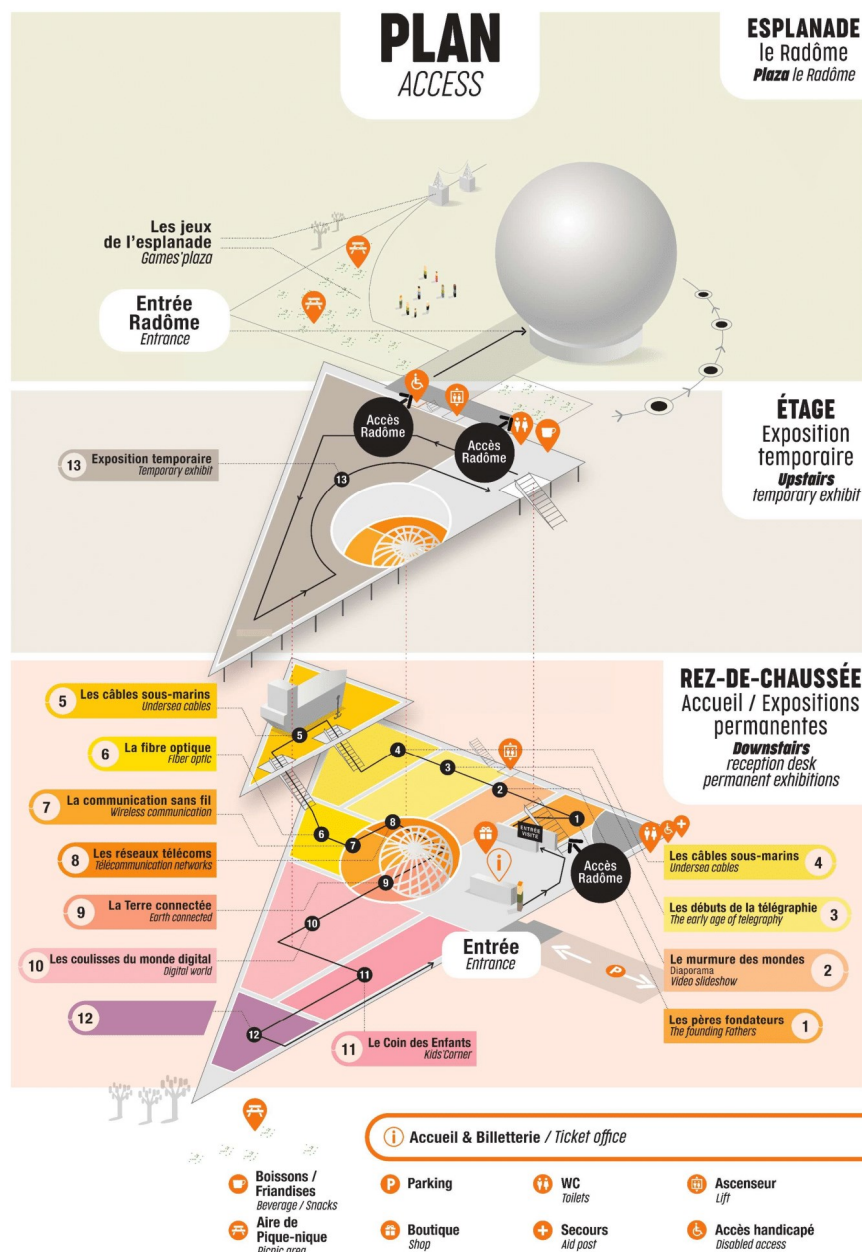
Visit

- For individuals :

- The visit of all the exhibitions is free.
- The Radôme is accessible during the immersive journey.
- Activities and guided tours are offered for those who wish. The schedules are available at the reception desk.

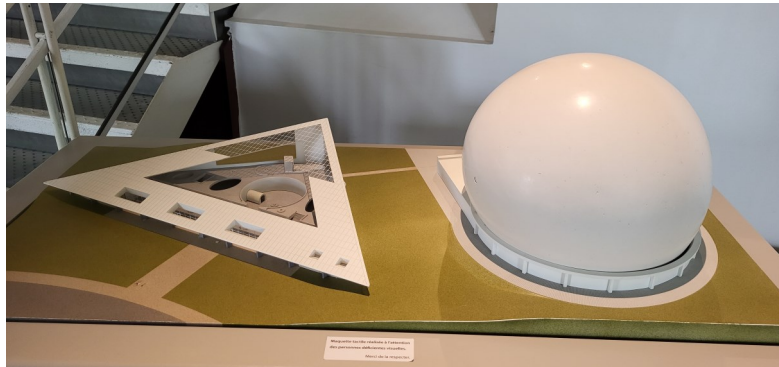
- For groups :

- The visits are adapted according to the handicap.
- A preliminary preparation with the accompanying persons is possible.
- Groups are taken care of upon arrival by one or more facilitators for their entire visit.



Finding your way

- The map of the exhibition centre is in the brochure given to each visitor at the reception desk. www.cite-telecoms.com/infos-pratiques/
- Each room is given a name and a number.
- A visual and tactile model of the external volumes and interior spaces is located on the first floor.



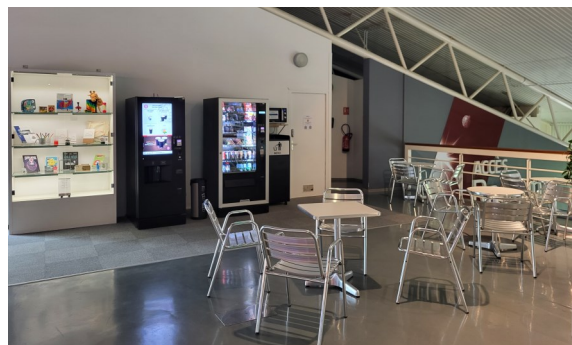
Getting around

- Guide and service dogs are welcome.
- Loan of cane chairs and wheelchairs on request at the reception desk.
- Elevator to go upstairs.
- Access to the Radome for wheelchairs through a specific airlock on call of a facilitator. Call button near the airlock door.
- All areas of the Cité des Télécoms are accessible with the exception of room 5 and a room-workshop, access to which is via a staircase.



Sitting back and relaxing

- Chairs and tables in the relaxation area upstairs (vending machines for drinks, sweets and snacks).
- Benches or seats in several rooms of the exhibition centre.
- Picnic areas in the park.
- Picnic areas in the park.
- Changing table near the toilet on the bar side of the floor.



Gifts, souvenirs

Postcards, books, games, labeled products... are on sale at the shop with free access.



Practical informations



Informations / Contact of the accessibility referent

Violaine Cogneau



02 96 46 63 88 - 07 88 74 19 83

accessibilite@cite-telecoms.com



Bookings

Group bookings: 02 96 46 63 81

reservations@cite-telecoms.com



Prices

- **Individual:** free admission for any person with a disability (on presentation of a supporting document and a valid identity document).

Group: please do not hesitate to contact us: 02 96 46 63 81.

We will work together to draw up the most suitable program for your organization.

Website : www.cite-telecoms.com



Localisation

- **Adress :**

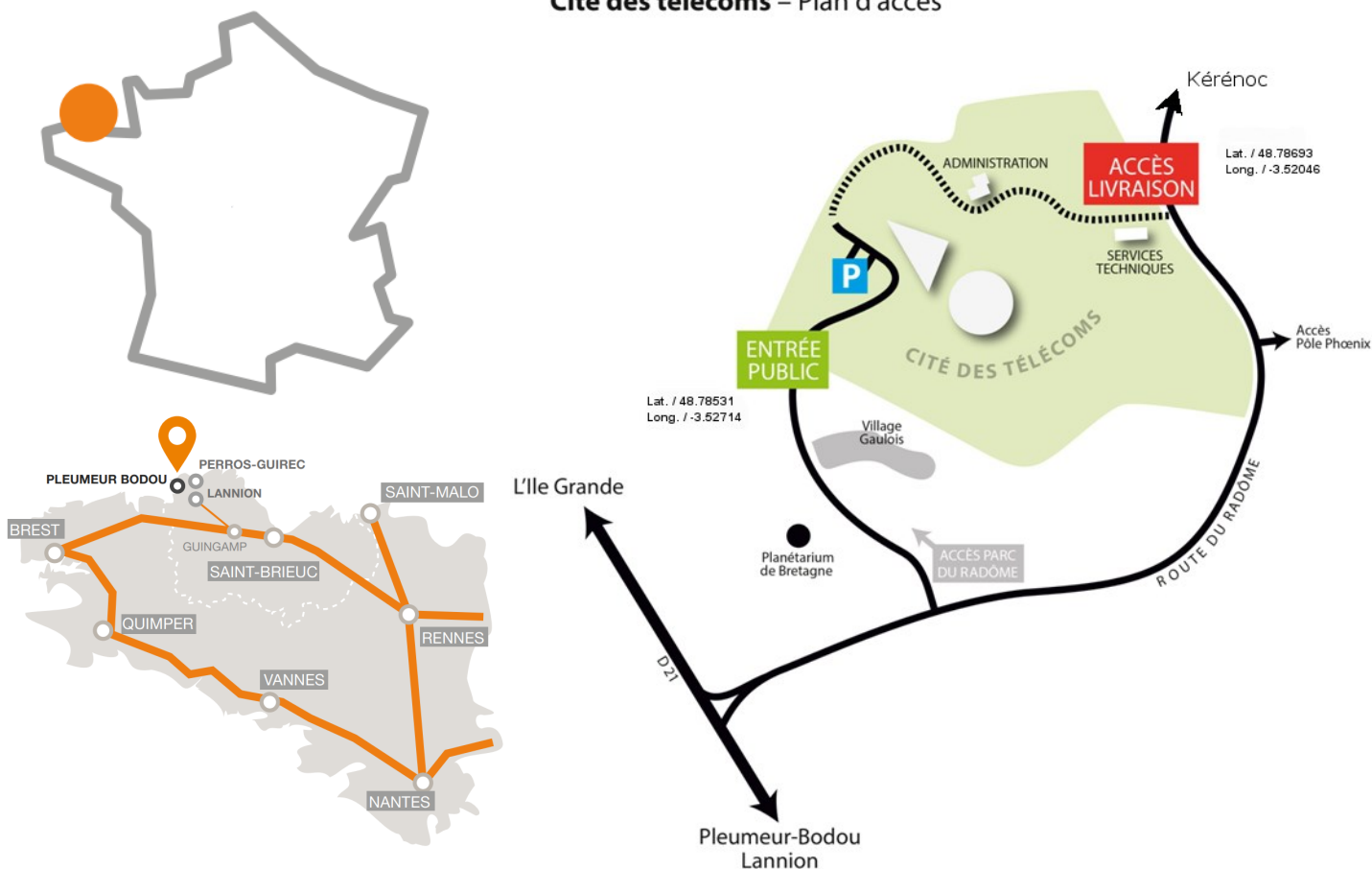
Cité des télécoms

Parc du Radôme

22560 Pleumeur-Bodou

- **Access :**

Cité des télécoms – Plan d'accès



- By train – Lannion train station + taxi or bus.

[Le réseau urbain et péri-urbain TILT \(lannion-tregor.com\)](http://lannion-tregor.com)

- By car :

- 10 minutes from Lannion and Perros-Guirec.
- From national road 12 « Brest-Rennes », exit « Lannion ».
Follow the signs « Pleumeur-Bodou » and « Parc du Radôme ».

- By bus : line D « Parc du Radôme » stop in summer only.
About 500 m to walk with a steep drop from the bus stop.

- **Person with reduced mobility places :**
 - A drop-off area is located in front of the entrance to the exhibition centre.
 - Disabled car parks :
 - 2 places in front of the entrance door of the exhibition centre.
 - 3 places in the visitors parking lot.





Cité des Télécoms

Corporate Foundation

Parc du Radôme, 22560 Pleumeur-Bodou

www.cite-telecoms.com / 02 96 46 63 80